

The Blue Canyon Hike

This hike is a somewhat steep hike from Highway 108 near Sonora Pass to two lakes, Blue Canyon Lake and Deadman Lake. The path of the hike can be seen in Figure 1.

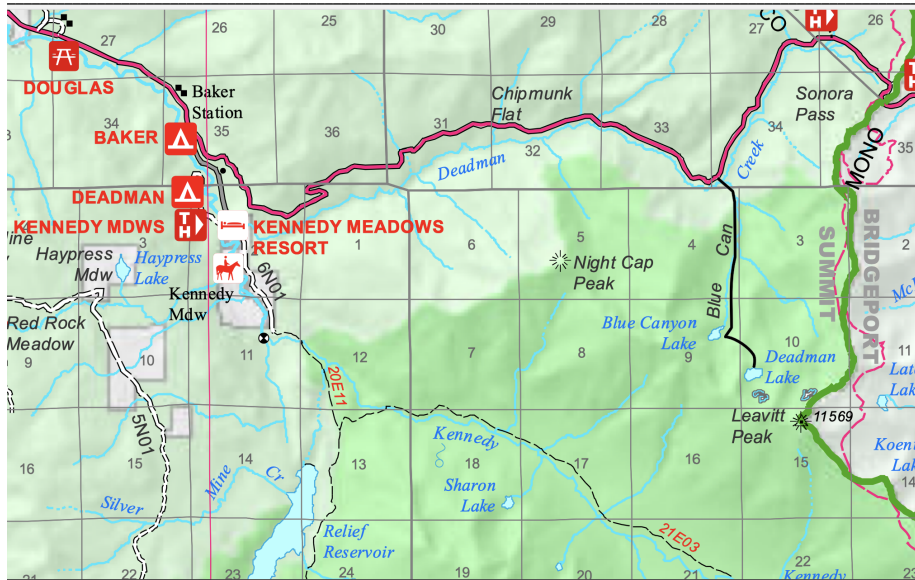


Figure 1: The Blue Canyon Hike.

The hike is relatively short; it is 1.5 miles to Blue Canyon Lake from the highway, and an additional 0.5 miles to Deadman Lake from Blue Canyon Lake. The total elevation gain is about 1800 feet.

The hike begins just above the sharp left-hand turn (coming from Pinecrest) that is seen on the highway in Figure 1. There are plenty of places to safely park one's car off of the highway. One must go steeply down into the Deadman Creek drainage and then back up the other side (see Figures 2 and 3). In Figure 3, one should climb up the bank towards the right-hand side of the picture.

After successfully crossing Deadman Creek and climbing out of the drainage, the trail is easy to follow (see Figure 4). In June and early July, there are lots of wildflowers along the trail (see Figures 5 and 6). One can also occasionally find interesting lichen on the rocks (see Figure 7).

Figures 8 and 9 show Blue Canyon Lake and Deadman Lake. To go from the first lake to the second, one climbs a low ridge to the east of the first lake. To get back to the highway, one simply retraces his or her steps.



Figure 2: Down Into Deadman Creek.



Figure 3: Up the Other Side.



Figure 4: The Trail Up Blue Canyon.



Figure 5: Wildflowers.



Figure 6: More Wildflowers.



Figure 7: Lichen.

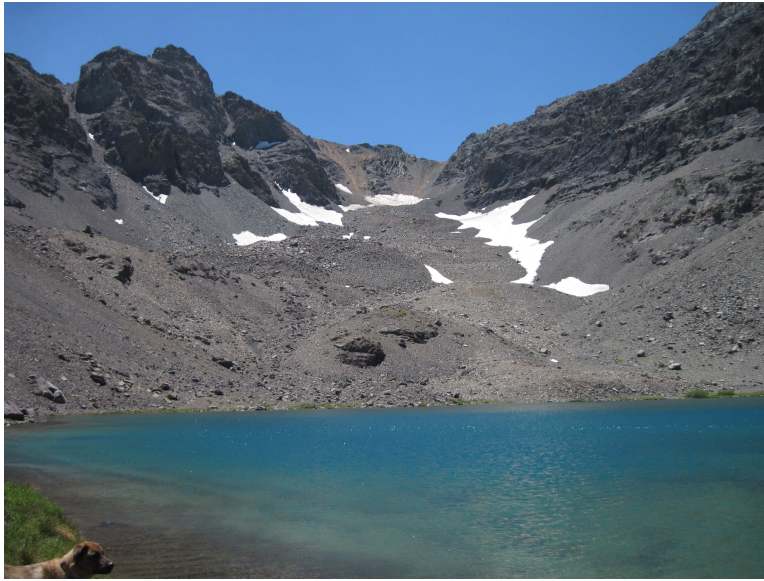


Figure 8: Blue Canyon Lake.



Figure 9: Deadman Lake.