

The East of Frankenstein's Bluff Hike

This is a difficult, but fairly short, cross-country hike that delivers great views of Pinecrest Lake and the canyon above the lake.

The beginning of the hike is the same as the beginning of the Frankenstein's Bluff hike; this latter hike's description should be referred to. The loop shown on the map in Figure 1 is about two miles in length. If one starts and ends at the trailhead for the Frankenstein's Bluff hike, the total length of the hike is about four miles.

In the map in the Frankenstein's Bluff description, one sees a very small pond just above mark 6. This pond is seen in the left-hand side of Figure 2, and it is the beginning of the route shown in the map in Figure 1 (the pond is at mark 1 on this map).

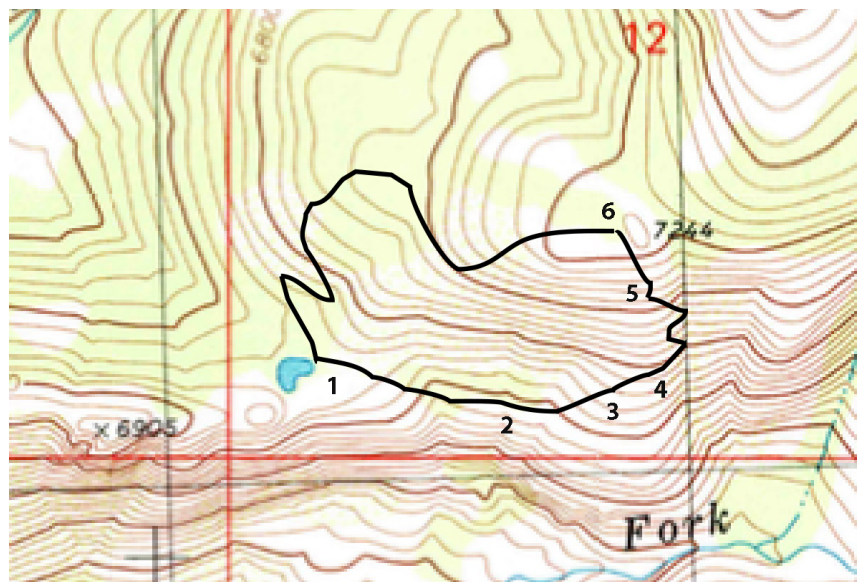


Figure 1: Cross-Country Section of Hike (marks 1-6).

One goes around the pond on its right-hand side, as seen in Figure 2. As the trail turns to the left, a trail takes off to the right. One should not take this trail. Instead, one should continue around the pond until the trail begins to leave the pond, as seen in Figure 3. At this point, one turns right. The view in Figure 4 should be visible.



Figure 2: A Small Pond.



Figure 3: Leave the Trail Here.



Figure 4: First Part of Cross-Country.

One sees on the map that the route goes down about 150 feet from the pond (the contour intervals are 40 feet). One does this to avoid the brushy section that is just north of the route. Figure 5 shows two hikers at mark 2 on the map; note that the brush is almost all to the left of the hikers. Figure 6 shows the view towards Pinecrest Lake from mark 2 on the map.



Figure 5: Avoiding the Brush.



Figure 6: Looking Back Towards the Lake.

After skirting the brush, a large granite slope is encountered. Figure 7 shows the view from part of the way up this slope. Figure 8 shows a view of the canyon above Pinecrest Lake from the slope.



Figure 7: The Beginning of the Granite Slope.



Figure 8: Looking East.

After climbing several hundred feet on this slope, one reaches a tricky section (mark 4 on the map). Figure 9 shows the author at the bottom of this section, with a more intrepid hiker in the top right-hand corner. One must climb up the granite in the middle of the picture, starting near the left-hand end. One heads towards the large tree in the top right-hand corner. After climbing to near the tree, one cuts to the left and after a little bit of steep climbing, one arrives at mark 5. The rest of the uphill section of this hike is over some steep but manageable terrain, shown in Figure 10. The top of the hike is in view in this figure.



Figure 9: The Tricky Part.



Figure 10: Past the Tricky Part.

Figure 11 shows the author nearing the top.



Figure 11: Nearing the Top.

Figure 12 shows a view of Pinecrest Lake from the top of the hike.



Figure 12: View of Pinecrest Lake.

Once the top has been reached, the rest of the hike is straightforward. One proceeds away from the canyon, walking north for about 200 yards. At this point, the Pinecrest Peak trail is encountered. One turns left and hikes down to the small pond where the cross-country began, and then continues back to either Pinecrest Lake or the trailhead.