

The Frankenstein's Bluff Hike

This is a very short and easy hike that affords one a great view of Pinecrest Lake (see Figure 1). This view is from mark 5 on the map in Figure 2.



Figure 1: View West From Top of Frankenstein's Bluff.

The trailhead for this hike is at mark 1 on the map. To get to the trailhead, one should drive from Pinecrest through Strawberry on Highway 108. About 2 miles past Strawberry, Herring Creek Road is on the right. One should drive along this road for about 2 miles, until one comes to a fork in the road. The paved road continues to the left; one should go right here onto the dirt road. This road is passable for 2-wheel drive vehicles. If you see a sign for Fiddler's Green, then you've gone slightly too far on Herring Creek Road; turn around and find the fork. The dirt road dead-ends in an open area (the trailhead) next to Herring Creek. One should park here and walk across the creek on the cement bridge.

The trail continues along the road on the other side of Herring Creek. After

about one-half mile, one comes to a fork in the road; stay to the left at this fork. The road eventually bends to the right and starts climbing. Soon after this (mark 4), one should see a trail coming in from the right; this trail is part of the Pinecrest Peak trail (see the Pinecrest Peak Hike description for information about this trail). About 50 feet further up the road, one should see the continuation of this trail on the left. The road continues to mark 3, but one should turn left here and head up the trail. Soon after leaving the road, one can turn right and head through the woods to the top of the ridge (mark 5). Alternatively, one can continue up the trail for another quarter-mile, and turn right off of the trail after leaving the forest. At this point, one heads for the top of the ridge (mark 6). It is possible to walk just north of the ridge from mark 5 to mark 6.

One can either return to the trailhead by reversing one's steps, or else walk down to Pinecrest Lake using the trail one encountered at mark 4.

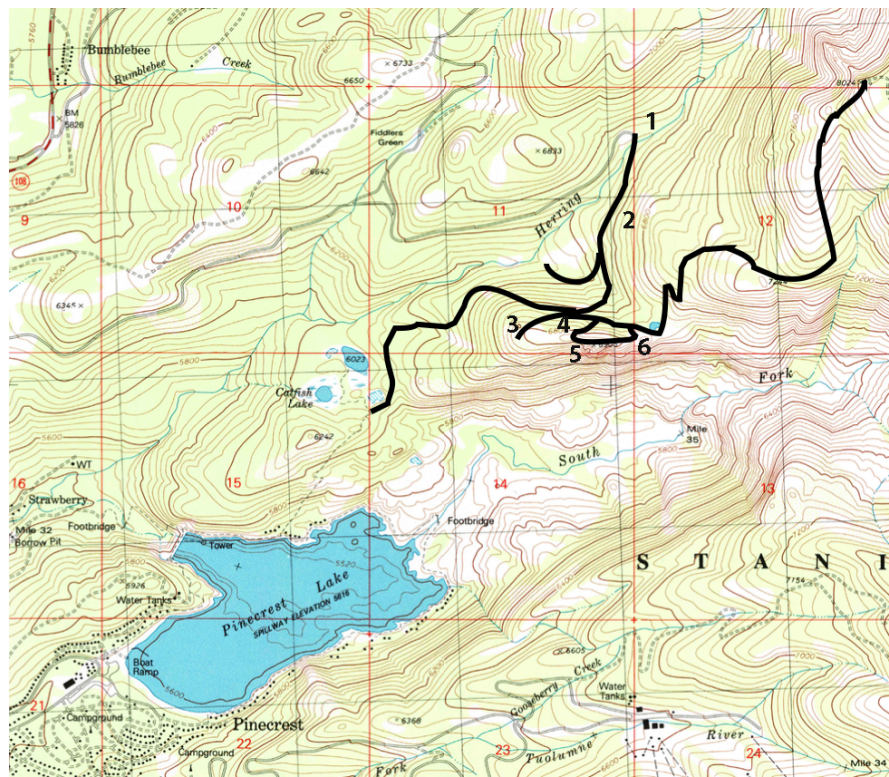


Figure 2: Frankensteins Bluff Map.

The view of the lake from mark 6 is shown in Figure 3.



Figure 3: Looking West From East End of Frankenstein's Bluff.

Figure 4 shows the view from mark 5 looking east.



Figure 4: Looking East From West End of Frankenstein's Bluff.

Figure 5 shows the South Fork of the Stanislaus River from mark 5 on the map. Cleo's Bath can be seen in the picture; it is the green pool just to the right of the granite cliff in the foreground.



Figure 5: Looking Down at the Stanislaus River.