

The West Fork of Cherry Creek Hike

This hike goes into a beautiful granite canyon, the canyon of the West Fork of Cherry Creek (see Figure 1).



Figure 1: The Canyon of the West Fork of Cherry Creek.

A map of the hike is shown in Figure 2.

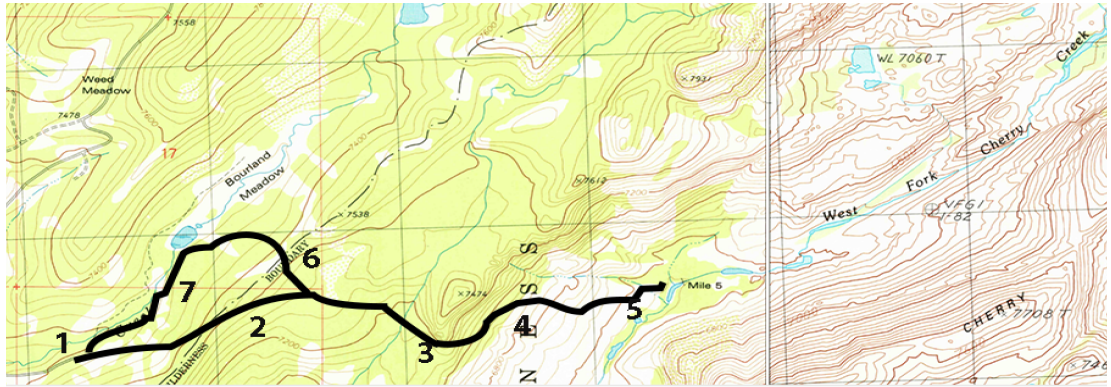


Figure 2: West Fork Cherry Creek Map.

The drive to the trailhead, shown at mark 1 in the map, takes more than an hour from Pincrest. One must use a National Forest Service map to find the right roads to follow. The best way to get to the trailhead is to drive to Long Barn and then follow the road to (and beyond) the Hull Creek Campground. The road to Bourland Meadow comes off of this road and is shown on the Forest Service map. The last five miles of this road are unpaved, but can be driven with a 2-wheel drive car.

From the trailhead, one should head east-north-east into the forest. There is very little underbrush in most parts of this forest; see Figure 3.



Figure 3: Near the Trailhead.

The granite nose shown in Figure 4 is a landmark; it is just north of mark 3 on the map.



Figure 4: The Granite Nose.

One should stay south of this nose and then head northeast and down into the canyon. There is an unmarked trail here, but it is hard to find. One can probably make it down to the creek without using this trail. Figure 5 is a picture from this part of the route.



Figure 5: Above the Canyon.

Figure 6 shows the canyon from mark 4. The ridge on the other side of the canyon is Cherry Ridge.



Figure 6: West Cherry Creek Canyon.

Figure 7 is looking east up the canyon.



Figure 7: Looking East.

The next three pictures show the West Fork of Cherry Creek.



Figure 8: West Fork of Cherry Creek.



Figure 9: Looking Up the West Fork.



Figure 10: Looking Down the West Fork.

One can return to the trailhead by retracing one's steps. Alternatively, at mark 6, one can go to the north and walk over the ridge into Bourland Meadow (shown in Figure 11). Once the meadow is entered, one can walk to the southwest, staying south of the creek coming out of the meadow, until one reaches the trailhead.



Figure 11: Bourland Meadow.